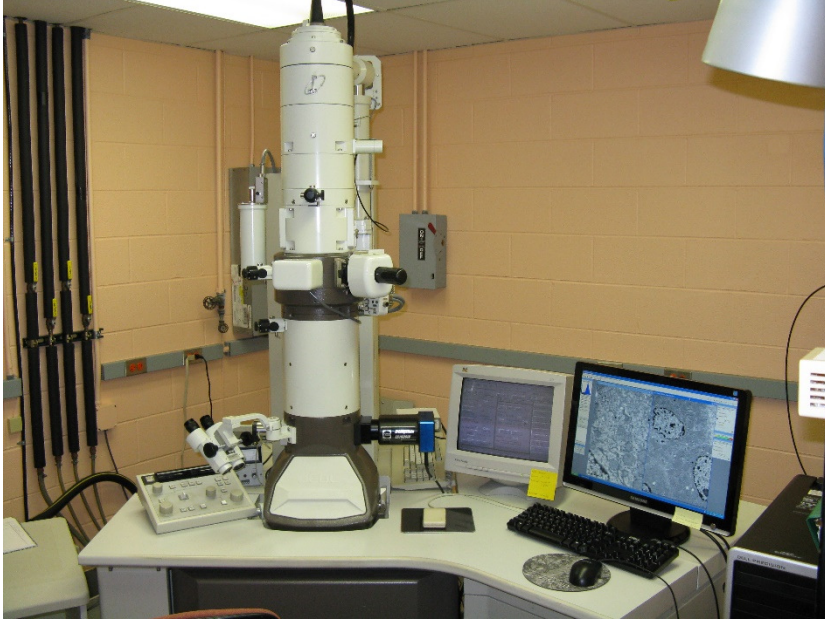


# JEOL JEM-1220

## Life Science Transmission Electron Microscope

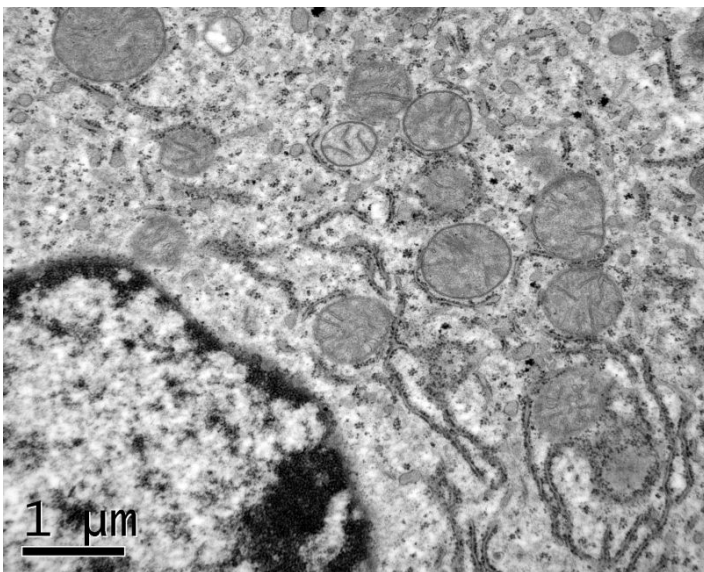
Location: Medical Sciences Building, E-5H



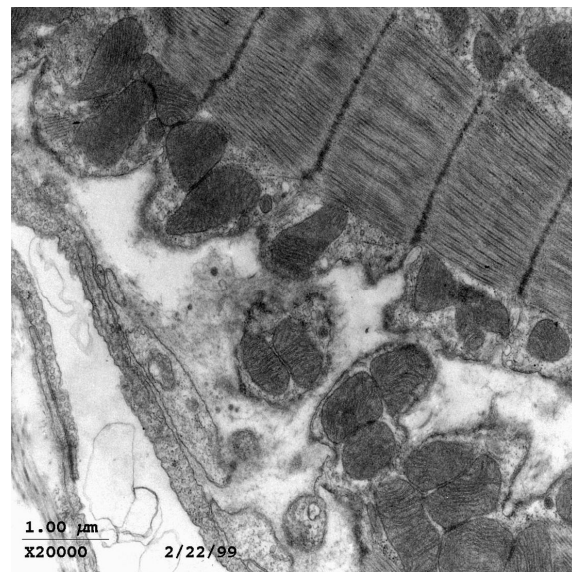
### Description

The Life Science TEM, the JEM-1220, is a 120kV transmission electron microscope fitted with a LaB6 electron source which was installed in 1997. For Life Science applications it is normally operated at 80kV.

The instrument has a Gatan Es1000W 11MP CCD camera above the viewing chamber, which reads out into a Windows XP computer using Digital Micrograph software.



*Liver*



*Atrial Muscle*

### Technical Specifications

- Resolution: 0.2nm lattice; 0.36nm point to point.
- Accelerating Voltage: 40, 60, 80, 100, 120kV.
- Goniometer Tilt Range: +/-30 degrees.
- Magnification range: 50x-600,000x.